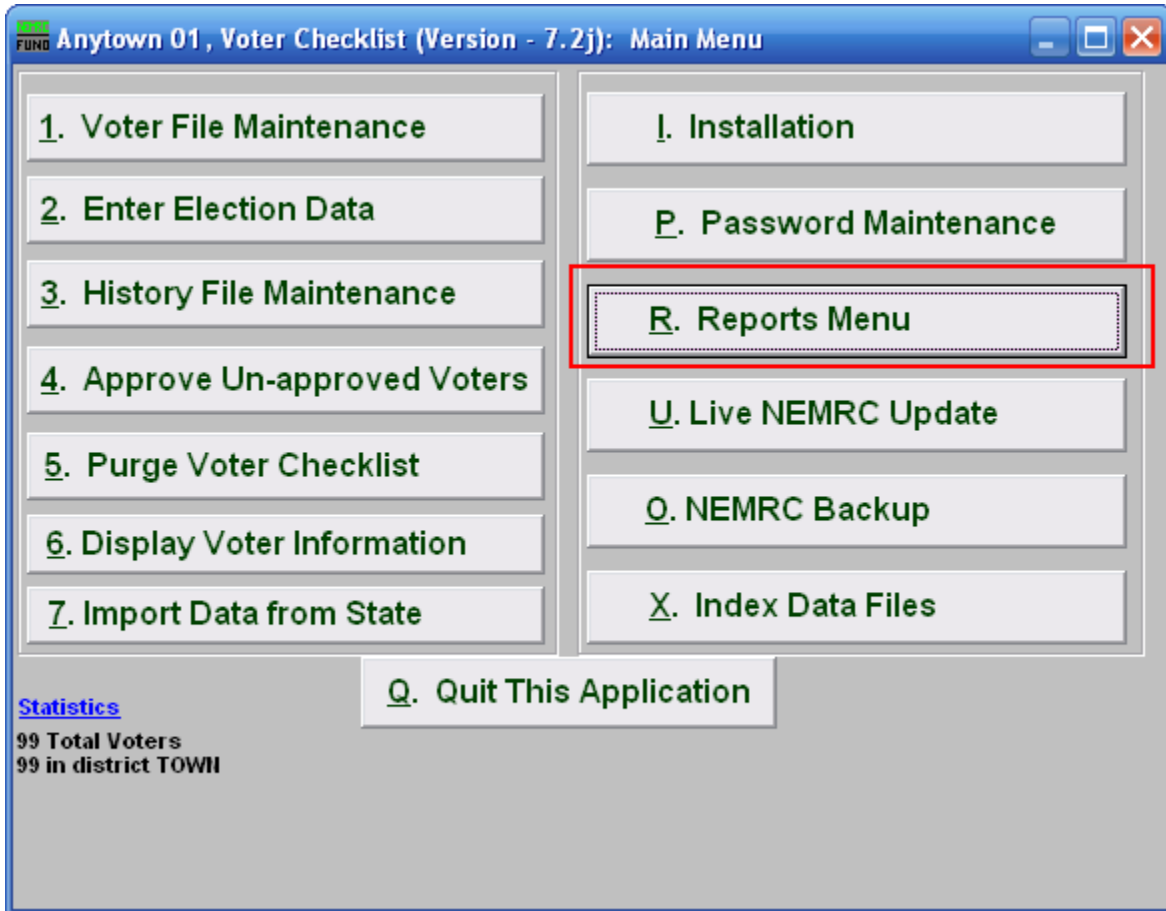


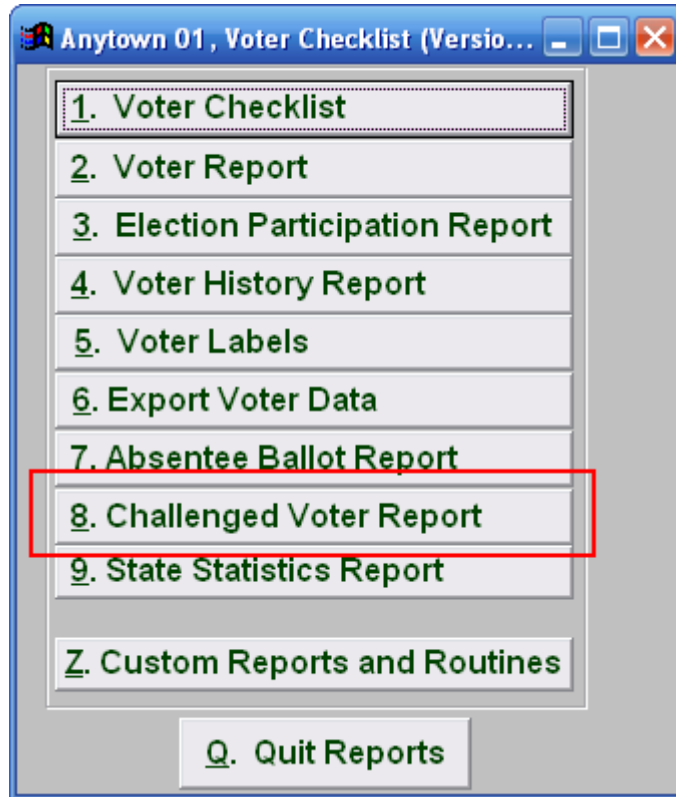
Voter Checklist

R. Reports Menu: 8. Challenged Voter Report



Click on "R. Reports Menu" from the Main Menu and the following window will appear:

Voter Checklist



Click on "8. Challenged Voter Report" from the Reports Menu and the following window will appear:

Voter Checklist

Challenged Voter Report

The screenshot shows a software dialog box titled "Challenged Report" with a "FUNO" logo in the top left corner. The dialog box has a blue title bar and standard window controls (minimize, maximize, close) in the top right. The main area is light gray and contains the following elements:

- Districts (Blank for all):** A text input field containing the number "1".
- FoxPro Filter Expression:** A text input field containing the number "2". To its right are three buttons: "New", "Edit", and "Delete".
- Include mailing address?:** A label followed by two radio buttons. The first is labeled "3" and "Yes", and the second is labeled "4" and "No". The "No" radio button is selected.
- Order:** A label followed by two radio buttons. The first is labeled "4" and "Name", and the second is labeled "Removal Date". The "Name" radio button is selected.
- Buttons:** At the bottom of the dialog box are three buttons: "Print 5", "6 Preview", and "7 Cancel".

- 1. Districts:** Enter the District you want the report to be for OR leave Blank for all.
- 2. FoxPro Filter Expression:** A conditional reporting expression developed with NEMRC support. This evaluates account information to determine if the account should be included. Contact NEMRC support to learn more about this option.
- 3. Include mailing address?:** Click to choose whether the mailing address is included in this report.
- 4. Order:** Click on the circle next to the order you want the report to print in.
- 5. Print:** Click this button to print. Refer to GENERAL PRINTING for more information.
- 6. Preview:** Click this button to preview. Refer to GENERAL PREVIEW for more information.
- 7. Cancel:** Click "Cancel" to cancel and return to the previous screen.